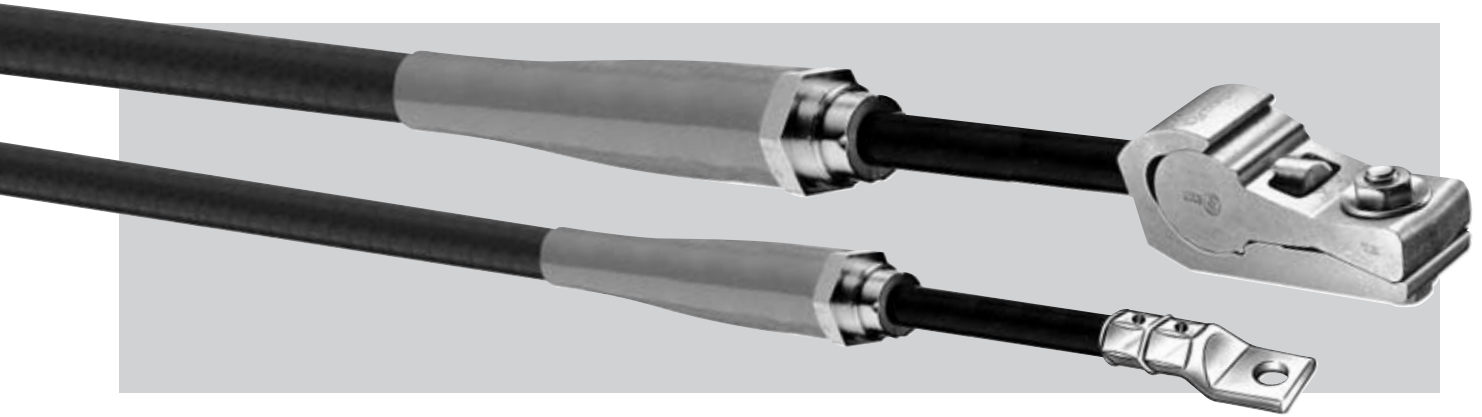
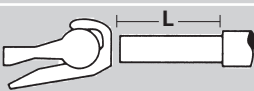


Publication CDE-0927 Rev. 0-1/06

Installation Recommendation for Lugs and Connectors for Pyro Mi Wiring Cables



CYTOLOK Lugs are quick and simple to install, since they are fitted with a spanner and do not require any special tooling.

| Ref: RQK | 16 | 25 | 35 | 50 | 70 | 95 | 120 | 150 | 185 | 240 | 300 | 400 |
|---------------------------------------------------------------------------------------|----|----|----|----|----|----|-----|-----|-----|-----|-----|-----|
|  mm | 20 | 25 | 30 | 38 | 38 | 45 | 50 | 60 | 60 | 70 | 70 | 80 |
| Stud Hole (mm) | 6 | 6 | 8 | 10 | 10 | 10 | 12 | 16 | 16 | 16 | 16 | 16 |

THE DIRECTIONS FOR INSTALLATION ARE AS FOLLOWS:

- 1** Remove 'L' mm of conductor sleeving. (see table)
- 2** Abraid the exposed conductor to remove the mineral insulant.
- 3** Assemble the lug, so that the XX marking is facing outwards. (Fig.1)

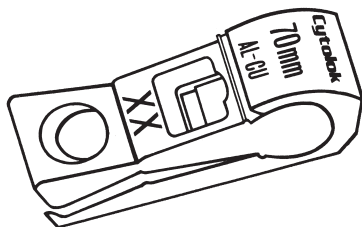


Fig. 1

- 4** Fully insert the conductor into the lug. (Fig. 2)

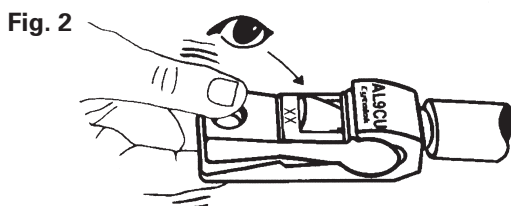
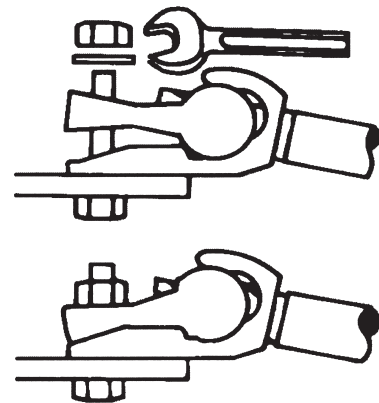


Fig. 2

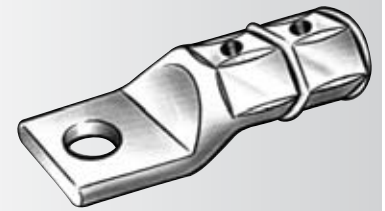
- 5** Bolt the lug to the apparatus and tighten with a spanner. When the lug is fully closed tighten the nut an additional 1/4 to 1/2 a turn. (Fig. 3 & 4)

Fig. 3 & 4



The CYTOLOK trademark is registered worldwide and the connectors are covered by one or more of the following U.S. patents as well as other patents and patent applications in countries throughout the world. 3.801.952, 3.831.134, 3.861.771, 3.879.104, 3.883.211, 3.932.021, 3.980.381, 3.990.129, 4.001.921, 4.014.078, 4.126.918, 4.357.068, 4.479.694, 296.777 Design, 4.548.462, 4.898.551, 159/12(Des.Appl)

CRIMP LUGS AND CONDUCTOR CABLES SUITABLE FOR USE WITH PYRO Mi WIRING CABLE



| Conductor CSA | Lug | Connector | Tooling | Die Set | No. of Crimps |
|---------------|------------------------------------------------------|------------|-----------|--------------|---------------|
| 1.0 | BT 1C 4 BT 1C 5 | BT 1 CS | BMR 6 U3 | Not required | 1 |
| 1.5 & 2.5 | BT 2 C4 BT 2 C5 BT 2 C6 BT 2 C8 | BT 2 CS | BMR 6 U3 | Not Required | 1 |
| 4.0 | BT 6 C5 BT 6 C6 BT 6 C8 BT 6 C10 | BT 6 CS | BMR 6 U3 | Not Required | 1 |
| 6.0 | BT 6C 5 BT 6C 6 BT 6C 8 BT 6C 10 | BT 6 CS | BMR 16 U3 | Not Required | 1 |
| 10.0 | BT 10 C6 BT 10 C8 BT 10 C10 BT 10 C12 | BT 10 CS | BMR 16 U3 | Not Required | 1 |
| 16.0 | BT 16 C6 BT 16 C8 BT 16 C10 BT 16 C12 | BT 16 CS | BMR 16 U3 | Not Required | 1 |
| 25 | BT 25 C8 BT 25 C10 BT 25 C12 | BT 25 CS | G10 | U 863 | 1 |
| 35 | BT 25 C8 BT 25 C10 BT 25 C12 | BT 25 CS | G10 | U 864 | 1 |
| 50 | BT 35 C8 BT 35 C10 BT 35 C12 | BT 35 CS | G10 | U 865 | 1 |
| 70 | BT 70 CE10 BT 70 CE12 | BT 70 CS | G10 | U 866 | 1 |
| 95 | BT 70 C10 BT 70 C12 BT 70 C16 | BT 70 CS | G10 | U 867 | 1 |
| 120 | BT 70 C10 BT 70 C12 BT 70 C16 | BT 70 CS | G10 | U 868 | 1 |
| 150 | BT 150 C10 BT 150 C12 BT 150 C16 | BT 150 CS | G10 | U 120 CHEX | 1 |
| 185 | BT 185 C10 BT 185 C12 BT 185 C16 BT 185 C20 | BT 185 CS | G10 | U 150 CHEX | 2 |
| 240 | BT 240 C10 BT 240 C12 BT 240 C16 BT 240 C20 | BT 240 CS | G10 | U 185 CHEX | 2 |
| 300 | BT 300 C16* | BT 300 CS* | G10 | U 240 CHEX | 2 |
| 400 | BT 400 C16* | BT 400 CS* | G10 | U 300 CHEX | 3 |

*Mechanically tested only.

NOTES

- The lugs and connectors detailed above can be obtained from many local wholesalers
- The tooling and dies, marked CHEX can also be obtained from many local wholesalers
- The crimping dies not marked CHEX are special and can be purchased or hired from specialist suppliers
- All the components described in the table can be obtained from the following specialist suppliers

Jointing Technologies

Unit 19, Woking Business Park
Albert Drive, Woking, Surrey
GU21 5JY

Tel: 01483 747747

Also at:

Bristol - Tel: 01454 322555

Wolverhampton - Tel: 01902 790777

ETS Cable Components

Units 4 & 5
Red Lion Business Park
Red Lion Road
Tolworth, Surrey
KT6 7QD

Tel: 0208 405 6789

TERMINATING TOOLS

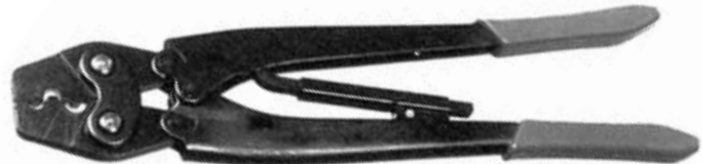
BMR 16U3

Ratchet type hand tool for 1mm² to 4mm² conductors. Dies incorporated.



BMR 16U3

Ratchet type hand tool for 6mm² to 16mm² conductors. Dies incorporated.

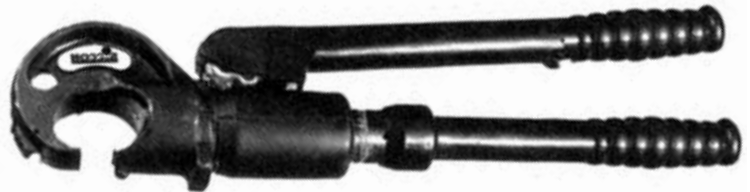


G10

Hydraulic type handtool for 25mm² to 240mm² conductors. Supplied in a steel carrying case with die storage compartments.

It must be emphasised most strongly that dies for stranded conductors are not suitable for solid conductors.

A range of special dies are therefore available.





Pyrotenax is a trademark of Tyco Thermal Controls LLC and its affiliates in designated countries

All of the information contained in this publication, including illustrations, is believed to be reliable. Users however, should independently evaluate the suitability of each product for their particular application. Tyco Thermal Controls makes no warranties as to the accuracy or completeness of the information, and disclaims any liability regarding its use. Tyco Thermal Control's only obligations are those in the Tyco Thermal Controls Standard Terms and Conditions of Sale for this product, and in no case will Tyco Thermal Controls or its distributors be liable for any incidental, indirect or consequential damages arising from the sale, resale, use or misuse of the product. Specifications are subject to change without notice. In addition Tyco Thermal Controls reserves the right to make changes - without notice to Buyer - to processing or materials that do not affect compliance with any applicable specification.

tyco / Thermal Controls

This document was supplied to you by:



Tyco Thermal Controls UK Limited
3 Rutherford Road, Stephenson Industrial Estate,
Washington, Tyne & Wear NE37 3HX, United Kingdom.
Tel: +44 (0) 191 419 8200 Fax:+44 (0) 191 419 8201
www.tycothermal.com